

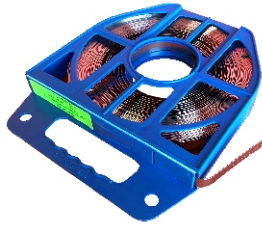
# Banding



**T 760-884-3735**

**F 760-737-0450**

[TrafficSupplyInc.com](http://TrafficSupplyInc.com)



**3/4" X 100'  
SS .030 BANDING**



**3/4" X 100'  
SS .020 BANDING**



**SS 3/4" BUCKLE**



**32" SS STRAP**



**STRAIGHT SADDLE**



**FLARED SADDLE**



**SS STRAIGHT SADDLE**

**Stainless steel banding is widely used with flared or straight saddles to install signage to large diameter or odd shaped posts, poles and columns.**

## **Tech notes:**

- Bulk stainless steel banding provides for a clean, very secure installation, but requires the use of a banding tool.
- 32" stainless steel "hose clamp" style straps will fit up to about a nine inch diameter pole, and can be installed with just a screwdriver.
- Saddles are used with the stainless steel strapping to provide a secure mounting point for whatever needs to be attached to the post, pole or column.
- Galvanized steel saddles are significantly less expensive than the stainless steel versions, and will usually serve equally as well.

**H-SSB 1/2 BANDING  
H-SSB 1/2 BUCKLES  
H-SSB 5/8 BANDING  
H-SSB 5/8 BUCKLES  
H-SSB 3/4 BANDING  
H-SSB 3/4 BUCKLES  
H-SSB 3/4 STRAP  
H-SSB 3/4 CLIP  
H-SSB TOOL  
H-32" SS STRAP  
H-SADDLE FLARED  
H-SADDLE STRAIGHT  
H-SADDLE SS FL WB  
H-SADDLE SS ST WB**

**1/2 X 100FT .030 BANDING  
1/2 BUCKLE (BOX OF 100)  
5/8 X 100FT .030 BANDING  
5/8 BUCKLE (BOX OF 100)  
3/4 X 100FT .030 BANDING  
3/4 BUCKLE (BOX OF 100)  
3/4 X 100FT .020 BANDING  
3/4 WING CLIP (BOX OF 100)  
BANDING TOOL  
32" SS HOSE CLAMP STRAP  
GALV STL FLARED SADDLE  
GALV STL STRAIGHT SADDLE  
SS FLARED SADDLE  
SS STRAIGHT SADDLE**