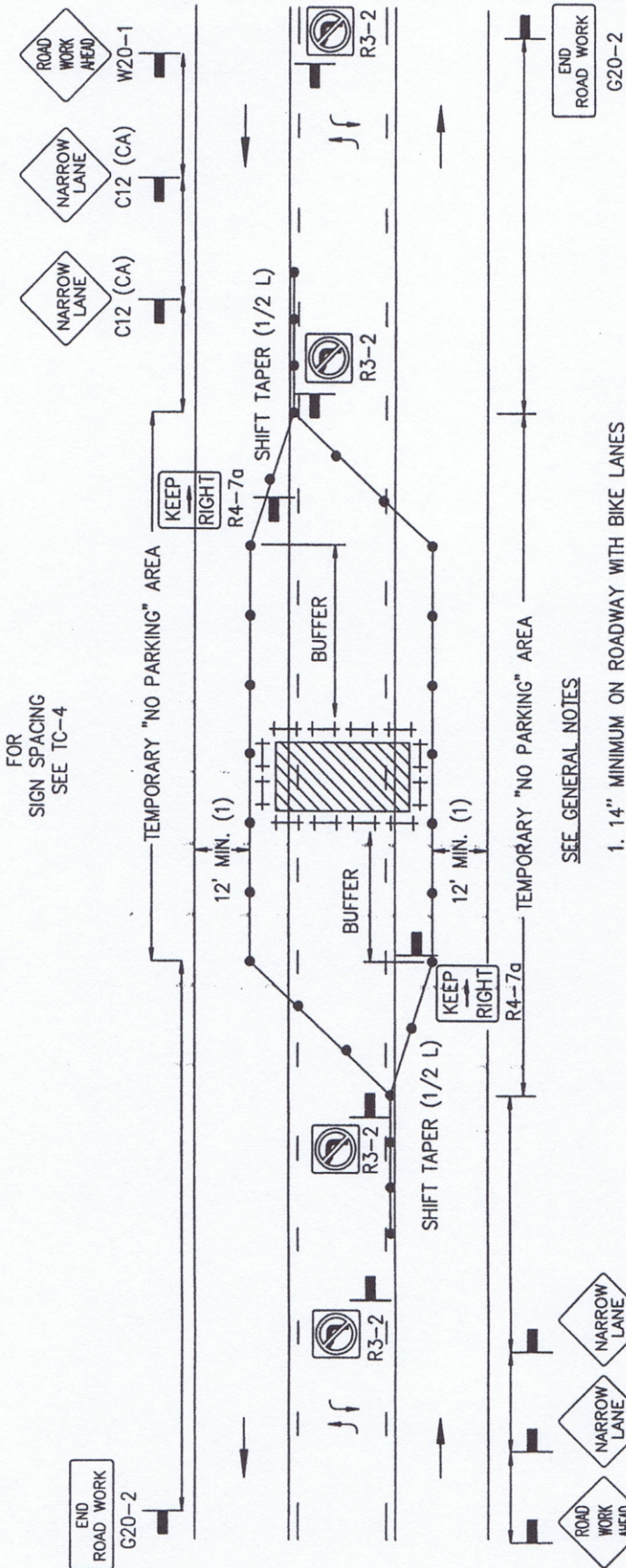


Revision	By	Approved	Date
DRAWING	CRH		4/06
ORIGINAL		<i>[Signature]</i>	4/27/06

APPENDIX "A"
SAN DIEGO REGIONAL STANDARD
CENTER OF ROAD WORK AREA
 MULTILANE TRAFFIC CONTROL WITH CENTERLINE
 LEFT TRAFFIC LANE CLOSURE - ONE LANE

DRAWING NUMBER **TC-15**



SEE GENERAL NOTES
 1. 14" MINIMUM ON ROADWAY WITH BIKE LANES

LEGEND

- CONE
- + BARRICADE
- FLAGGER
- SIGN
- FLASHING ARROW SIGN
- WORK AREA
- TRAFFIC DIRECTION

AGENCY ENGINEER'S COMMENTS

POSTED SPEED LIMIT	APPROACH SPEED	TAPER LENGTH	SPACING OF CONES	SIGN SPACING	BUFFER LENGTH

GENERAL NOTES

See TC-4 for sign spacing, spacing of cones, taper and buffer lengths. For hours of darkness, change cones to vertical barricades with steady burn lights. This plan DOES NOT apply to signalized or multi-way stop intersections. Consult the local jurisdiction when preparing Traffic Control Plans near these intersections. This plan MAY NOT apply when the work areas affect bike lanes, sidewalks, pedestrian access and/or curved or narrow roadways. Consult the approving agency when preparing the Traffic Control Plan or these areas. Nothing contained on this drawing shall prevent local jurisdictions from modifying, changing or adopting new specifications deemed necessary. Criteria for position, location and use of Traffic Control Devices is solely for the purpose of guidance to assist in the set up of the Traffic Control Plans. TC-5 is required for all Traffic Control Plans.

AGENCY USE

APPLICANT USE

SUBMITTED BY: _____

NAME _____

COMPANY _____

ADDRESS _____

PHONE _____