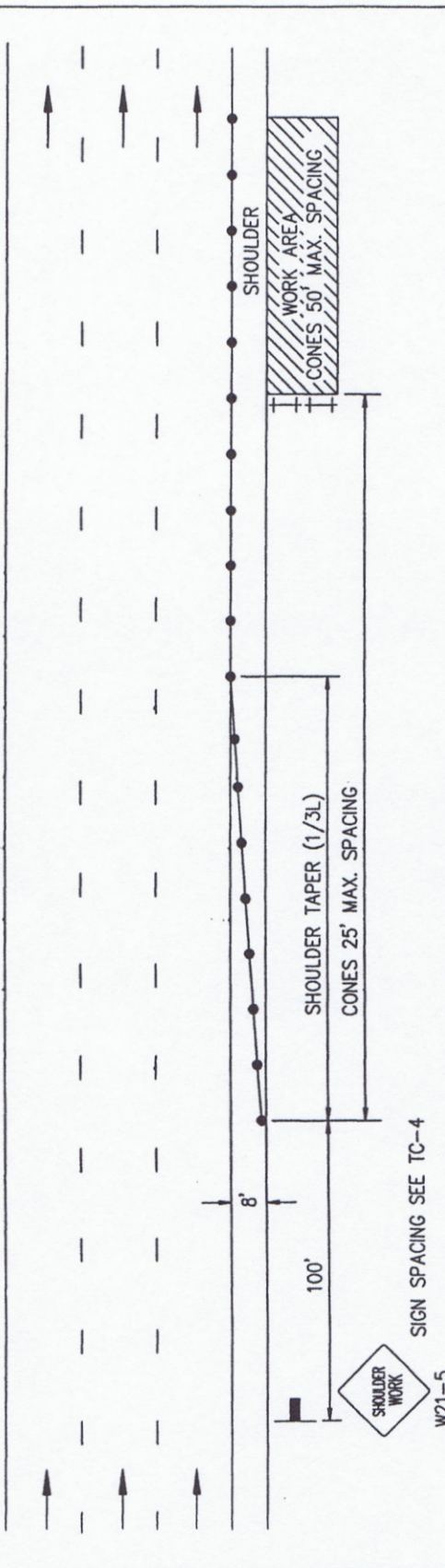


RAISED MEDIAN



LEGEND

- CONE
- + BARRICADE
- FLAGGER
- SIGN
- ⚡ FLASHING ARROW SIGN
- ▨ WORK AREA
- ↔ TRAFFIC DIRECTION

AGENCY ENGINEER'S COMMENTS

AGENCY USE

APPLICANT USE

POSTED SPEED LIMIT	APPROACH SPEED	TAPER LENGTH	SPACING OF CONES	SIGN SPACING

SEE TC-4 FOR SIGN, CONE SPACING AND TAPER LENGTH

GENERAL NOTES

For hours of darkness, change cones to vertical barricades with steady burn lights.
 This plan DOES NOT apply to signalized or multi-way stop intersections. Consult the local jurisdiction when preparing Traffic Control Plans near these intersections.
 This plan MAY NOT apply when the work areas affect bike lanes, sidewalks, pedestrian access and curved or narrow roadways. Consult the approving agency when preparing the Traffic Control Plan or these areas.
 Nothing contained on this drawing shall prevent local jurisdictions from modifying, changing or adopting new specifications deemed necessary. Criteria for position, location and use of Traffic Control Devices is solely for the purpose of guidance to assist in the set up of the Traffic Control Plans.
 TC-5 is required for all Traffic Control Plans.

SUBMITTED BY:
 NAME _____
 COMPANY _____
 ADDRESS _____
 PHONE _____

APPENDIX "A"
 SAN DIEGO REGIONAL STANDARD
 TYPICAL SHOULDER CLOSURE
 MULTILANE ROADWAY WITH RAISED MEDIAN

DRAWING NUMBER TC-44

Revision	By	Approved	Date
DRAWING	CRH		4/06
ORIGINAL		<i>[Signature]</i>	4/27/06